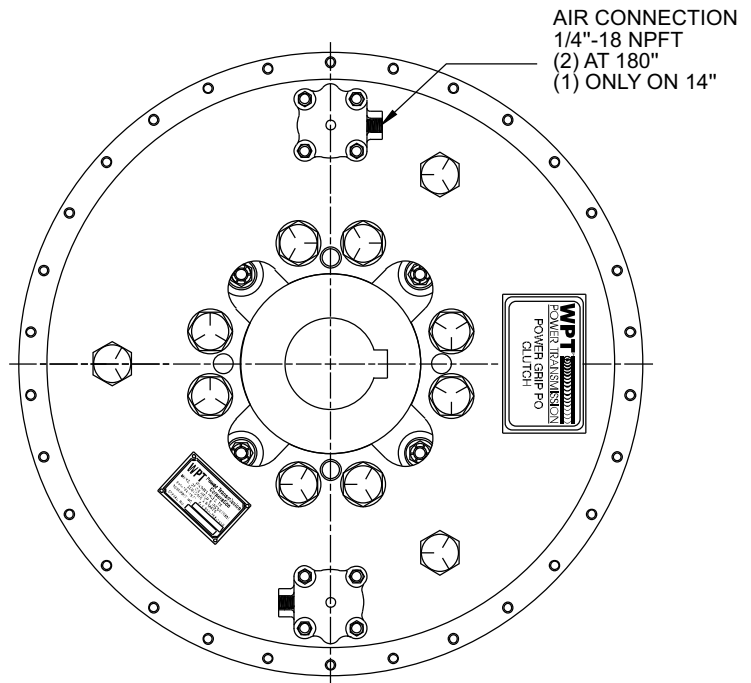
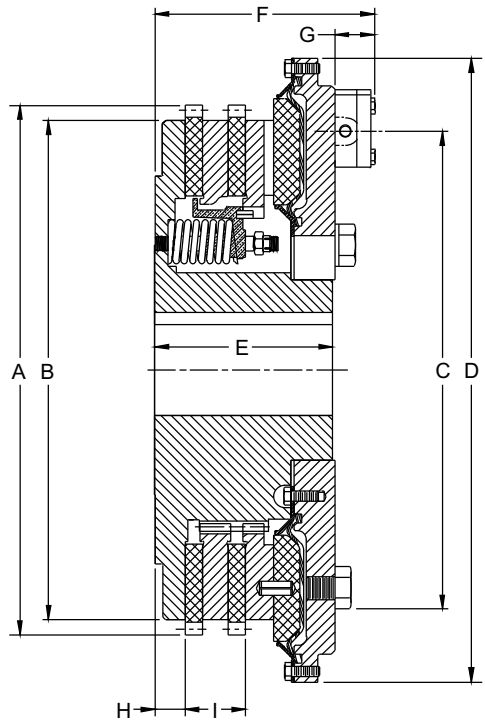


Power Grip PO Clutche



DIMENSIONS inche (mm)

| SIZE | A (ref only) | B | C | D | E | F | G | H | I |
|------|--------------------|----------------|---------------------|--------------------|----------------------|----------------------|-------------------|-------------------|---------------------|
| 114 | 15 1/8 (384.2) | 14 (355.60) | 13 1/4 (336.55) | 18 1/2 (469.90) | 4 25/64 (111.52) | 5 7/8 (149.23) | 1 7/16 (36.51) | 7/8 (22.23) | 5/8 (15.88) |
| 214 | 15 1/8 (384.2) | 14 (355.60) | 13 1/4 (336.55) | 18 1/2 (469.90) | 5 25/32 (146.84) | 7 1/4 (184.15) | 1 7/16 (36.51) | 7/8 (22.23) | 1 29/32 (48.42) |
| 314 | 15 1/8 (384.2) | 14 (355.60) | 13 1/4 (336.55) | 18 1/2 (469.90) | 7 9/64 (181.37) | 8 19/32 (218.28) | 1 7/16 (36.51) | 7/8 (22.23) | 3 3/16 (80.96) |
| 118 | 19 1/8 (485.8) | 18 (457.20) | 17 1/4 (438.15) | 22 1/2 (571.50) | 4 51/64 (121.84) | 6 7/32 (157.96) | 1 7/16 (36.51) | 1 5/64 (27.38) | 5/8 (15.88) |
| 218 | 19 1/8 (485.8) | 18 (457.20) | 17 1/4 (438.15) | 22 1/2 (571.50) | 6 27/64 (163.12) | 7 29/32 (200.82) | 1 7/16 (36.51) | 1 5/64 (27.38) | 2 3/16 (55.56) |
| 318 | 19 1/8 (485.8) | 18 (457.20) | 17 1/4 (438.15) | 22 1/2 (571.50) | 8 3/64 (204.39) | 9 61/64 (252.81) | 1 7/16 (36.51) | 1 5/64 (27.38) | 3 3/4 (95.25) |
| 124 | 25 1/16 (636.6) | 24 (609.60) | 23 1/2 (596.90) | 28 7/8 (733.43) | 5 31/32 (151.61) | 7 29/64 (189.31) | 1 7/16 (36.51) | 1 7/16 (36.51) | 7/8 (22.23) |
| 224 | 25 1/16 (636.6) | 24 (609.60) | 23 1/2 (596.90) | 28 7/8 (733.43) | 7 5/8 (193.68) | 9 7/64 (231.38) | 1 7/16 (36.51) | 1 7/16 (36.51) | 2 17/32 (64.29) |
| 324 | 25 1/16 (636.6) | 24 (609.60) | 23 1/2 (596.90) | 28 7/8 (733.43) | 9 3/8 (238.13) | 10 49/64 (273.45) | 1 7/16 (36.51) | 1 7/16 (36.51) | 4 3/16 (106.36) |
| 230 | 31 1/8 (790.58) | 30 (762.00) | 29 3/32 (738.98) | 34 1/2 (876.30) | 8 31/64 (215.50) | 9 29/32 (251.62) | 1 7/16 (36.51) | 1 7/8 (47.63) | 2 43/64 (67.87) |
| 330 | 31 1/8 (790.58) | 30 (762.00) | 29 3/32 (738.98) | 34 1/2 (876.30) | 10 25/64 (263.92) | 11 27/32 (300.83) | 1 7/16 (36.51) | 1 7/8 (47.63) | 4 15/32 (113.51) |

Certified print available on request.

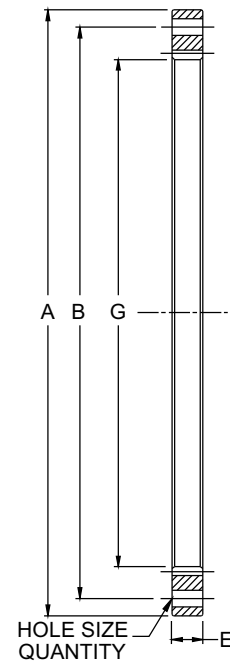
Power Grip PO Clutche

SPECIFICATIONS

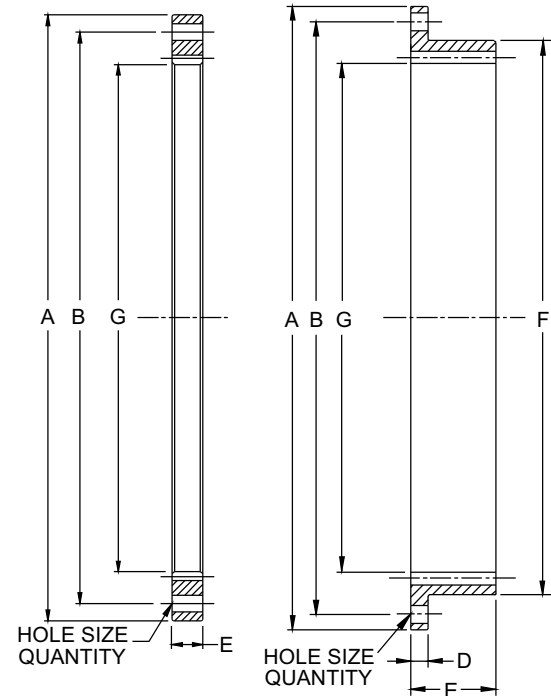
| Model | Torque Rating @ 100 p i (lb-in)/7 bar (Nm) | | | | Maximum Speed rpm | Weight lb (kg) | Bore Range | |
|-------|--|---------|----------------|--------|----------------------|--------------------|-------------|--------------|
| | Static Torque | | Dynamic Torque | | | | Minimum | Maximum |
| | lb-in | Nm | lb-in | Nm | | | inche (mm) | inche (mm) |
| 114 | 38,400 | 4,410 | 28,800 | 3,305 | 2,450 | 145 (66) | 2.00 (50.8) | 3.50 (88.9) |
| 214 | 76,800 | 8,820 | 57,600 | 6,610 | 2,450 | 185 (84) | 2.00 (50.8) | 3.50 (88.9) |
| 314 | 115,200 | 13,230 | 86,400 | 9,915 | 2,450 | 220 (100) | 2.00 (50.8) | 3.50 (88.9) |
| 118 | 78,500 | 9,015 | 58,875 | 6,760 | 2,000 | 280 (127) | 2.94 (74.6) | 4.55 (115.6) |
| 218 | 157,000 | 18,030 | 117,750 | 13,520 | 2,000 | 360 (163) | 2.94 (74.6) | 4.55 (115.6) |
| 318 | 235,500 | 27,045 | 176,625 | 20,280 | 2,000 | 430 (195) | 2.94 (74.6) | 4.55 (115.6) |
| 124 | 188,300 | 21,630 | 141,225 | 16,220 | 1,500 | 570 (259) | 3.00 (76.2) | 6.00 (142.4) |
| 224 | 376,600 | 43,260 | 282,450 | 32,440 | 1,500 | 725 (329) | 3.00 (76.2) | 6.00 (142.4) |
| 324 | 564,900 | 64,890 | 423,675 | 48,660 | 1,500 | 880 (399) | 3.50 (88.9) | 6.00 (142.4) |
| 230 | 731,000 | 83,970 | 548,250 | 62,980 | 1,300 | 1,220 (553) | 3.75 (95.3) | 7.00 (177.8) |
| 330 | 1,096,500 | 125,955 | 822,375 | 94,470 | 1,300 | 1,400 (635) | 3.75 (95.3) | 7.00 (177.8) |

Consult WPT Engineering for application assistance and applicable safety/service factor.

TYPE A



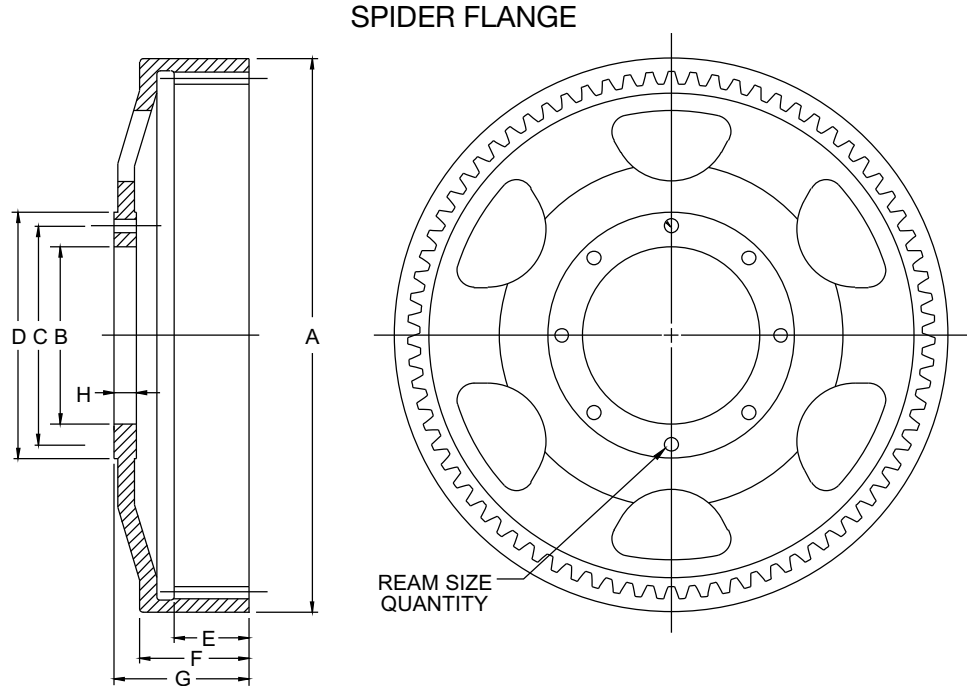
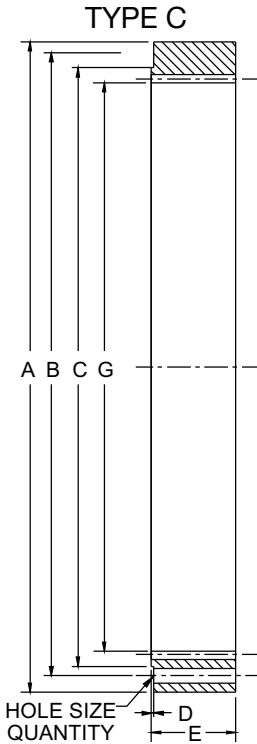
TYPE B



DRIVE RING DIMENSIONS inche (mm)

| SIZE | RING TYPE | A | B | C | D | E | F | G (ref only) | HOLE SIZE | QTY | NO. OF TEETH | WEIGHT lb (kg) |
|------|-----------|----------------------------------|--------------------|----------------------------------|----------------|-------------------|--------------------|----------------------|-------------------|-----|--------------|--------------------|
| | | +0.000/-0.005 (+0.000/-0.127) | | +0.000/-0.005 (+0.000/-0.127) | | | | | | | | |
| 114 | B | 18.375 (466.73) | 17 1/4 (438.15) | - | 1/2 (12.70) | 1 1/8 (28.58) | 16 (406.40) | 14 23/64 (364.7) | 17/32 (13.49) | 8 | 59 | 17 (7.7) |
| 214 | B | | | | | 2 3/8 (60.33) | | | | | | 26 (11.8) |
| 314 | B | | | | | 4 (101.60) | | | | | | 43 (19.5) |
| 118 | B | 22.500 (571.50) | 21 3/8 (542.93) | - | 5/8 (15.88) | 1 1/8 (28.58) | 20 (508.00) | 18 3/8 (466.7) | 21 /32 (16.67) | 6 | 75 | 24 (11) |
| 218 | B | | | | | 3 1/16 (77.79) | | | | | | 43 (19.5) |
| 318 | B | | | | | 4 1/4 (107.95) | | | | | | 55 (25) |
| 124 | A | 28.875 (733.43) | 27 1/4 (692.15) | - | 3/4 (19.05) | 1 1/2 (38.10) | 25 7/8 (657.23) | 24 25/64 (619.52) | 25/32 (19.84) | 12 | 99 | 65 (30) |
| 224 | B | | | | | 3 1/2 (88.90) | | | | | | 67 (31) |
| 324 | B | | | | | 5 1/2 (139.70) | | | | | | 88 (40) |
| 230 | C | 34.750 (882.65) | 33 (838.20) | 32.000 (812.80) | 1/8 (3.18) | 4 1/2 (114.30) | - | 30 23/64 (771.13) | 25/32 (19.84) | 12 | 123 | 230 (104) |
| 330 | C | | | | | 7 (177.80) | | | | | | 361 (377) |

- Plate separator and over size release spring in ure positive mechanical plate separation.
- No adjustment for the life of the friction material. Diaphragm compensate for wear.
- All clutches come standard with mechanical lockup feature for emergency use.
- Large diaphragm actuator provide more torque and minimize release drag.
- Retained spring within the plate separator allow for easier servicing.
- Quick release valve are included on all clutches.



SPIDER FLANGE DIMENSIONS inche (mm)

| SIZE | A | B | C | D | E | F | G | H | REAM SIZE | QTY | WEIGHT lb (kg) |
|------|--------------------|---------------------------------|----------------|--------------------|--------------------|---------------------|---------------------|------------------|-----------------|-----|-------------------|
| | | +0.002/-0.000 (+.051/-0.000) | | | | | | | | | |
| 114 | | | | | 7/8 (22.23) | 2 1/16 (52.39) | 3 1/8 (79.38) | | | | 27 (12.2) |
| 214 | 16 (406.40) | 6.500 (165.10) | 8 (203.20) | 9 (228.60) | 2 1/4 (57.15) | 3 7/16 (87.31) | 4 1/2 (114.30) | 5/8 (15.88) | .500 (12.70) | 8 | 38 (17) |
| 314 | | | | | 3 3/4 (95.25) | 4 15/16 (125.41) | 6 (152.40) | | | | 49 (22) |
| 118 | | | | | 1 1/16 (26.99) | 2 5/16 (58.74) | 3 1/4 (82.55) | | | | 56 (25) |
| 218 | 20 1/4 (514.35) | 6.500 (165.10) | 8 (203.20) | 9 (228.60) | 2 3/4 (69.85) | 4 (101.60) | 4 15/16 (125.41) | 13/16 (20.64) | .500 (12.70) | 8 | 82 (37) |
| 318 | | | | | 4 1/8 (104.78) | 5 3/8 (136.53) | 6 5/16 (160.34) | | | | 99 (45) |
| 124 | | | | | 1 3/8 (34.93) | 3 1/4 (82.55) | 4 1/2 (114.30) | | | | 121 (55) |
| 224 | 26 1/4 (666.75) | 8.000 (203.20) | 10 (254.00) | 11 1/2 (292.10) | 3 1/4 (82.55) | 5 1/8 (130.18) | 6 3/8 (161.93) | 15/16 (23.81) | .625 (15.88) | 8 | 154 (70) |
| 324 | | | | | 5 3/16 (131.76) | 7 1/16 (179.39) | 8 5/16 (211.14) | | | | 181 (82) |