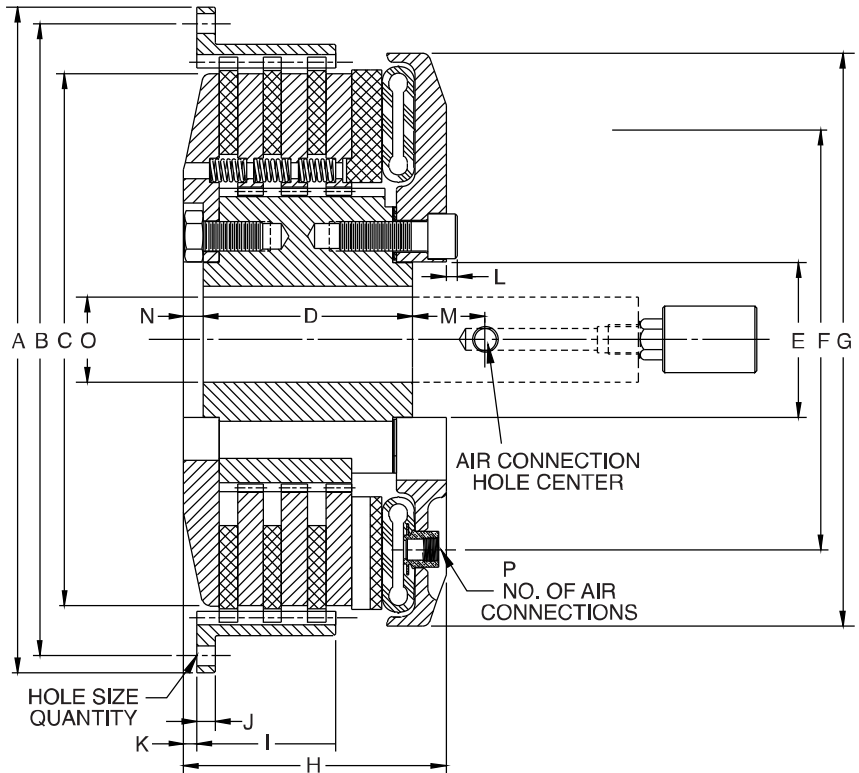


Power Grip High Speed Clutches

Power Grip High Speed Clutches are designed to withstand severe applications mounted to internal combustion engines. The drive rings will fit standard SAE industrial flywheels. Heavy duty laminated gear teeth friction discs are designed to withstand heavy shock loads and torsional vibrations. Clutches are balanced to the maximum speeds shown below. Do not exceed the capacities in the chart below for internal combustion engines.



CLUTCH SIZE	MAX HP (kW) PER 100 RPM	MAX HP (kW) @ MAX RPM	MAX SPEED RPM
214H	21 (15.7)	485 (360)	2,300
314H	32 (23.9)	735 (550)	2,300
218	40 (29.8)	840 (625)	2,100
318	60 (44.7)	1,260 (940)	2,100
321	114 (85.0)	2,050 (1530)	1,800

For starting high inertia loads requiring more than a 2-3 second start, consult WPT Engineering for selection assistance.

DIMENSIONS inches (mm)

SIZE	A	B	HOLE SIZE	QTY	C	D	E	F	G	H	I	J	K
	+0.000/-0.005 (+.000/-0.13)												
214H	18.375 (466.73)	17 1/4 (438.15)	17/32 (13.49)	8	14 (355.60)	5 3/4 (146.05)	4 1/2 (114.30)	12 1/2 (317.50)	16 5/16 (414.34)	6 1/2 (165.10)	2 3/8 (60.33)	1/2 (12.70)	3/4 (19.05)
314H	18.375 (466.73)	17 1/4 (438.15)	17/32 (13.49)	8	14 (355.60)	7 3/16 (182.56)	4 1/2 (114.30)	12 1/2 (317.50)	16 5/16 (414.34)	8 (203.20)	4 (101.60)	1/2 (12.70)	3/4 (19.05)
218	22.500 (571.50)	21 3/8 (542.93)	21/32 (16.67)	6	18 (457.20)	5 13/16 (147.64)	5 1/4 (133.35)	14 3/16 (360.36)	20 (508.00)	7 1/8 (180.98)	3 5/8 (92.08)	5/8 (15.88)	3/8 (9.53)
318	22.500 (571.50)	21 3/8 (542.93)	21/32 (16.67)	6	18 (457.20)	7 3/4 (196.85)	5 1/4 (133.35)	14 3/16 (360.36)	20 (508.00)	8 7/8 (225.43)	4 11/16 (119.06)	5/8 (15.88)	3/8 (9.53)
321	26.500 (673.10)	22 1/4 (571.50)	21/32 (16.67)	12	21 (533.40)	8 5/8 (219.08)	7 (177.80)	16 (406.40)	21 5/16 (541.34)	10 1/8 (257.18)	5 (127.00)	5/8 (15.88)	3/4 (19.05)



SIZE	L	M	N	O MIN	O MAX	P QTY
214H	—	2 1/4 (57.15)	—	2.13 (54.0)	3.25 (82.6)	2
314H	—	2 1/4 (57.15)	—	2.13 (54.0)	3.25 (82.6)	2
218	3/8 (9.53)	2 7/16 (61.91)	7/16 (11.11)	2.38 (60.3)	3.88 (98.4)	3
318	3/8 (9.53)	2 7/16 (61.91)	—	2.38 (60.3)	3.88 (98.4)	3
321	1 (25.40)	2 3/8 (60.33)	1/2 (12.70)	2.75 (69.9)	4.75 (120.7)	3

Driving ring mounts to standard SAE industrial flywheel. Larger bore sizes may be accommodated. Consult with WPT Engineering.