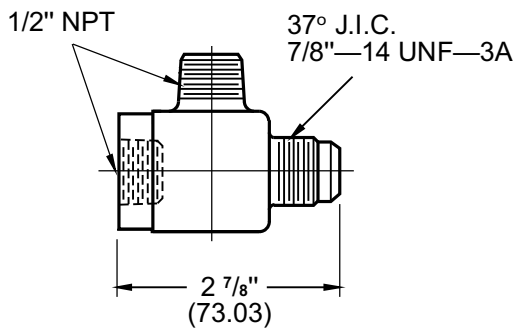
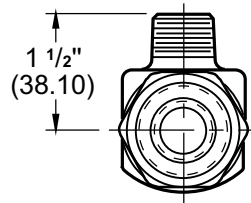


# ACCESSORIES

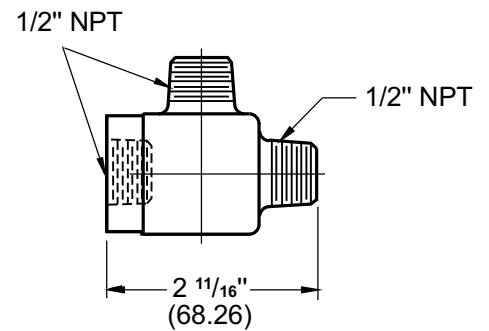
## Air Accessories For Low Inertia Clutches And Brake Quick Release Valve (Spring Loaded)



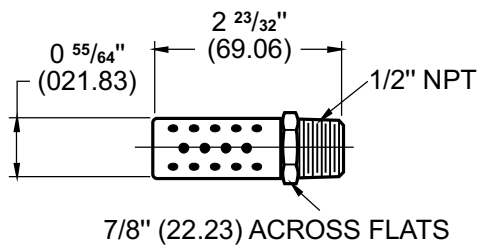
**WOO-10-900  
QRV**



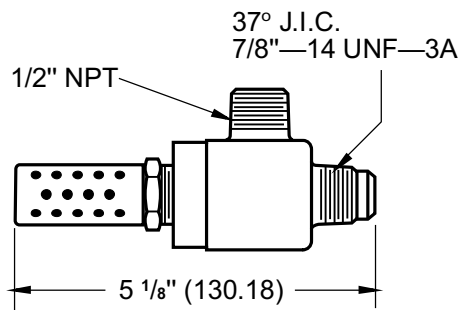
**END VIEW**



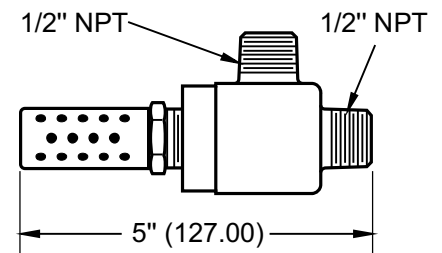
**WOO-10-901  
QRV**



**WOO-10-906  
MUFFLER**



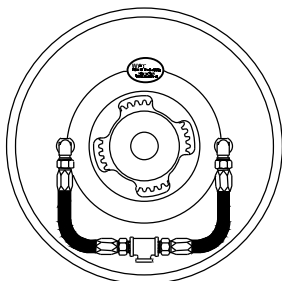
**WOO-10-917  
QRV w/MUFFLER**



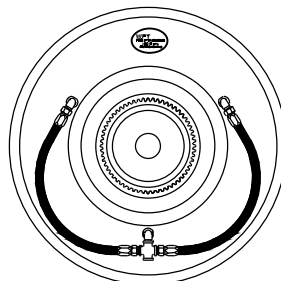
**WOO-10-918  
QRV w/MUFFLER**

Quick Release Valve are not available for 4" and 6" unit .  
Elbow can be used in place of QRV' in application where failure point is not critical.

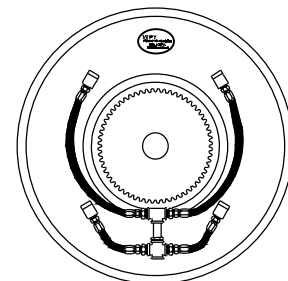
## Typical Hose Arrangement for Low Inertia Brake



**8"—16"**

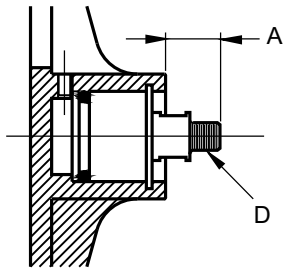
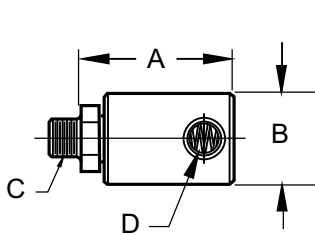


**18"—27"**

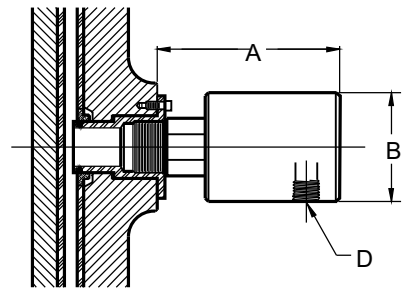
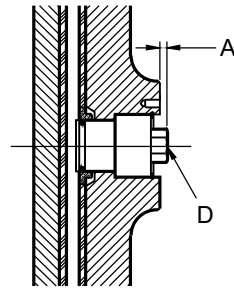


**30"—48"**

## Air Rotating Union (Roto-Coupling )



**Low Inertia Clutche**



**High Torque Clutche**

### Rotating Air Union Dimension for Low Inertia Clutche

CLUTCH SIZE	AIR UNION PART NUMBER	A INCHES (mm)	B INCHES (mm)	C ROTOR THREAD	D INLET THREAD
104-206	W00-21-006	2 5/8 (66.68)	1 5/8 (41.28)	5/8"-18 UNF	1/4" NPT
108-321	W00-21-002	3 23/32 (94.36)	2 1/4 (57.15)	1"-14 UNS	1/2" NPT/BSPT
124-327	W00-21-008	4 5/16 (109.54)	2 7/8 (73.03)	1"-14 UNS	3/4" NPT
230-348	W00-21-010	1 15/32 (37.31)	NA	NA	1" NPT
124-348*	W00-21-011	5 1/8 (130.18)	3 1/4 (82.55)	1 1/2"-12 UNF	1" NPT
230-348**	W00-21-033	7 (177.80)	4 1/4 (107.95)	2"-12 UN	1 1/2" NPT
260-460	W00-21-020	12 5/8 (320.68)	7 (177.80)	2 1/2" NPT	2 1/2" NPT

\*Optional external rotating air union

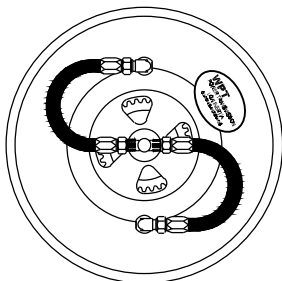
\*\*Large capacity external rotating air union for fa ter re pon e time

### Rotating Air Union Dimension for High Torque Clutche

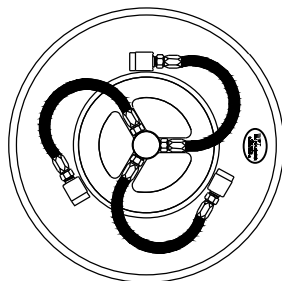
CLUTCH SIZE	AIR UNION PART NUMBER	ADAPTER PART NUMBER	A INCHES (mm)	B INCHES (mm)	C ROTOR THREAD	D INLET THREAD
111-336	W00-21-000	NA	19/64 (7.54)	NA	NA	1/2" NPT/BSPT
116-330*	W00-21-011	W00-21-018	5 7/16 (138.11)	3 1/4 (82.55)	1 1/2"-12 UNF	1" NPT
236-336*	W00-21-049	W00-21-058	8 (203.20)	4 1/4 (107.95)	1 3/4"-12 UN	1 1/2" NPT

\*Large capacity external rotating air union for fa ter re pon e time

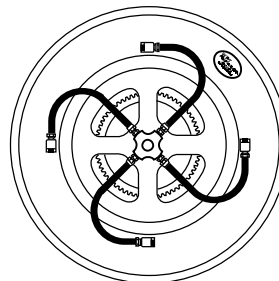
## Typical Ho e Arrangement for Low Inertia Clutche



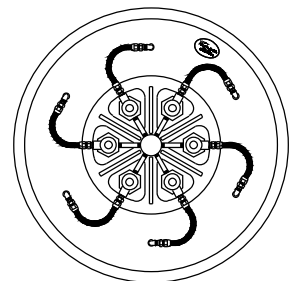
**8"—16"**



**18"—27"**



**30"—48"**



**60"**